



**UNILÖCK**  
clamping solutions

**THE ACCURACY OF MECHANICS,  
THE HUMAN TOUCH.**

# UNILÖCK

clamping solutions

## UNILOCK. THE PRECISION OF MECHANICS, THE HUMAN TOUCH.

Since 1985 Unilock plays a key role in the world of precision mechanics, on the other hand, maintaining high standards is closely connected with what we produce: clamping systems, **collet chucks and collets for C.N.C. lathes**, are in fact our main products.

At the same time, we, at Unilock, have always put the progress and evolution of industrial production, first, with a proactive attitude always aimed at technological innovation, which has allowed us to become an excellence in our sector. We have collaborated with Italian and foreign companies since the beginning, thanks to the experience gained over the years by the founder Umberto Crosti.

Since the 1990s, Unilock has filed patents and trademarks, distinguishing itself for its dedication in the area of research and development. And, with a view to continuous improvement, since 2018 the Electronics Division has become the technological spin-off of the company, with the name of Atlas Advanced Technologies, the section that develops IoT systems, consulting and training for the world of Industry 4.0.

## TAILOR-MADE TECHNOLOGY, AT PEOPLE'S SERVICE.

Industry 4.0 is focused on automation, on machines that replace human work. We, at Unilock, believe that our work exists in function of human potential: producing tools and accessories suitable for facilitating the working processes for people, this is the real strength of the industry. We offer precision, reliability and quality for those who choose our products, and we are always ready to meet the needs of each customer.

Unilock, in fact, can be considered an **atelier of precision mechanics**: attention to customer needs is our priority. We are able to provide customized solutions in a very short time, sharing the ideas with the customers, to create special applications and customized products and solve specific needs proposing optimal solutions. All this is possible thanks to an agile structure, which allows direct and accurate contact with the customers.

## UNILOCK PEOPLE, OUR FUTURE AND A NEW PARADIGM.

Our strength also comes from the people who works at Unilock and who have grown together with the company. The development towards the Industry 4.0 model, in which the most repetitive actions are entrusted to automated or robotic systems, simplifies the task performed by our manpower, allowing them to focus more on activities where the expertise they have acquired can be used in an even more efficient way.

What do we see in our future? From 1985 to today, technological changes have been ever faster: if the technologies of the beginning of the new millennium today seem very far away, recent years have seen a real race for innovation, a race with which Unilock has been able to keep up. In our future we see even more multitasking CNC machine at the edge of the technology combined with the implementation of additional robotized workflows, in order to allow greater efficiency in work processes and an increase of production. In short, we are facing a new paradigm, with which Unilock lives and works in perfect harmony, especially thanks to **Atlas Advanced Technologies**, created to bridge the gap still present between the entrepreneurial substrate of Italian SMEs and realize the vision of Industry 4.0, also through the training of resources, to prepare them to the future.



## Atlas

Advanced Technologies s.r.l.

[www.unilock.it](http://www.unilock.it)

# COLLET CHUCKS FOR C.N.C.

We have developed the new series of **Unilock Italian Style** chucks down to the smallest detail to ensure high performance. Our experience, gained over many years, has allowed us to create them in a perspective that guarantees reliability and precision, with the aim of making any work process easier and faster and increasing productivity.

## COLLET CHUCKS

- **SMH COMPATIBLE** - Pulling force system
- **SMS COMPATIBLE** - Dead-length system
- **SME** - Expansion system

## COMPATIBILITY

- All Unilock SMH collet-chucks are compatible with original Hainbuch collets
- All Unilock SMS models are compatible with FB, BA and DIN 6343 collets



**SMH COMPATIBLE**  
Pulling force system



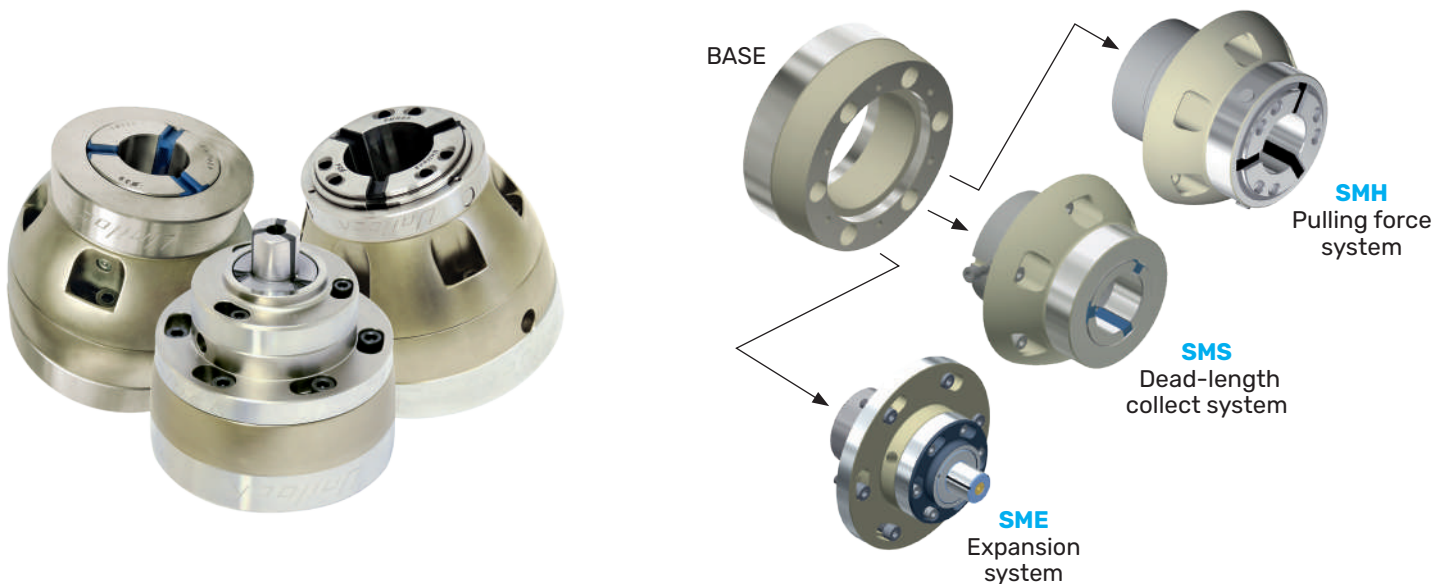
**SMS COMPATIBLE**  
Dead-length collect system



**SME**  
Expansion system

## FORMULA SYSTEM

The FORMULA system has been designed to enable the customer to choose the clamping system most suitable to the type of machining to be performed. **Utilising the same base ensures quick change over times maximising productivity.**



**NEW DESIGN, MEETING THE HIGHEST DEMANDS.**

# COLLETS FOR LATHES C.N.C.

We also offer, ready for delivery, a wide range of collets, whose characteristics are great clamping force, elasticity and extreme precision, as well as high compatibility with all original Hainbuch chucks, FB, BA and DIN 4363 and with the whole range of automatic bar feeder models.

## CLAMPING COLLETS

- **SMH COMPATIBLE** - Sistema di serraggio a tiro
- **SMS COMPATIBLE** - Sistema di serraggio a pinza ferma
- **SME** - Sistema di serraggio a espansione
- **SP COMPATIBLE** - Sistema di serraggio per torni plurimandrino

## COMPATIBILITY

- All Unilock SMH collets are compatible with original Hainbuch collet-chucks
- All Unilock SMS collets are compatible FB, BA e DIN 6343
- SP system for multi spindle lathes: GILDEMEISTER, INDEX, MORI-SAY, SCHUTTE, WICKMAN



### SMH COMPATIBLE

Pulling force clamping system



### SMS COMPATIBLE

Stationary force clamping system



### SME

Expansion clamping system

## BAR LOADERS

- Compatible with each model of automatic bar-loader

## FEED FINGERS

- For multi spindle lathes

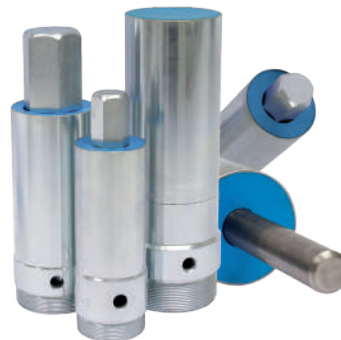
## COMPATIBILITY

- All feed finger collets are compatible with all popular models of automatic bar feeder/loader



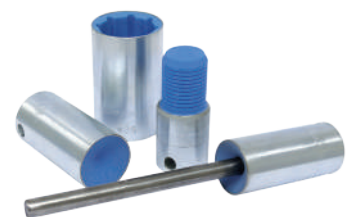
### SP COMPATIBLE

Clamping collects for multi spindle lathes



### FEED FINGERS

For multi spindle lathes



### BAR LOADER

Collets

HIGH CLAMPING FORCE, FLEXIBILITY AND PRECISION.

# ACCESSORIES FOR AUTOMATIC BAR LOADERS

We complete our range of products for CNC machine with a series of high-quality spare parts and accessories, studied and designed to improve the entire work set-up of bar loaders. Due to the use of thermoplastic material, they offer significant advantages, such as the reduction of vibrations, the reduction of noise and the increase in the number of RPM of the bar to be machined.

## GUIDE CHANNEL

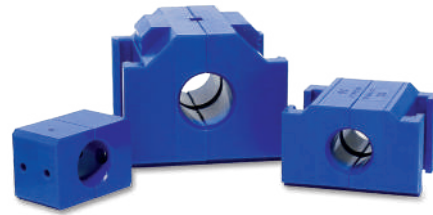
- For every bar-loader model



**IEMCA loader**  
Guide Channel

## BUSHES FOR BAR-LOADERS

- For every bar-loader model



**IEMCA loader**  
Bushes

## SPINDLE LINERS - VIBRATION DAMPENING

- Mono and multi-spindle lathe



**SPINDLE LINERS**  
Vibration dampening

## BAR-LOADER COLLETS

- Compatible with each model of automatic bar-loader



**INDEX LOADER**  
Guide channel



clamping solutions

**UNILOCK**  
clamping solutions

**UNILOCK SAS**

Viale Edison, 56  
20090 Trezzano S/N (MI) • Italy  
(+39) 02 48401499  
info@unilock.it  
www.unilock.it