

# CLAMPING COLLECTS

## MULTI SPINDLE LATHES SYSTEM

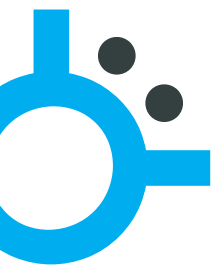


QUICK CHANGE CLAMPING COLLETS

07

**UNILÖCK**  
clamping solutions

THE ACCURACY OF MECHANICS,  
THE HUMAN TOUCH.



# SP - CLAMPING COLLETS

## MULTI SPINDLE LATHES SYSTEM



**SP clamping collets** (for multi spindle lathes), are composed of metal inserts joined by vulcanised rubber. **This allows the collet to close radially in a perfect manner, blocking the part along the entire length of the hole** and eliminates the intrusion of shavings inside the spindle.

Moreover, the construction flexibility of the system allows easy specific solutions (drawn bars, rolled items and pipes).

### QUICK CHANGE COLLET

The system allows a fast front removal of the collet. In this way, replacement or disassembly collet cleaning operations result easier and quicker, without dead times.

For multi spindle lathes:  
**GILDEMEISTER, INDEX, MORI-SAY  
SCHUTTE, WICKMAN**

## ADVANTAGES

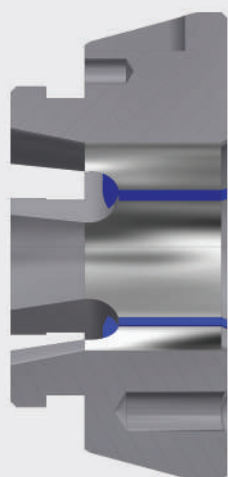
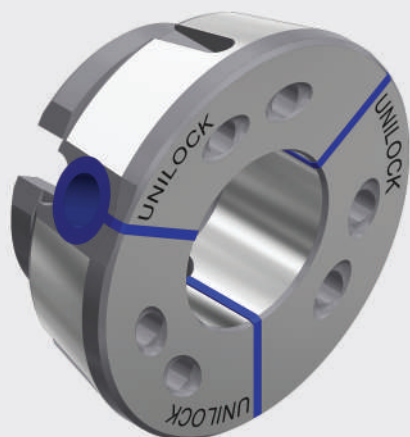
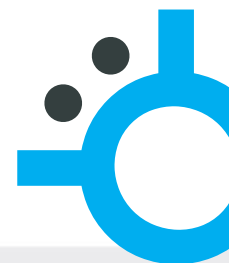
- **SP clamping collets close with TAPERED COUPLING.**

This feature allows a bar clamping over the entire length of the collet hole with a force from 5 to 10 times greater than conventional collets.

- Excellent elasticity
- Reduction of vibrations
- Less tool wear
- No wear on the collet
- Does not mark the surface of the part
- Quick change collet
- Fewer machine downtimes

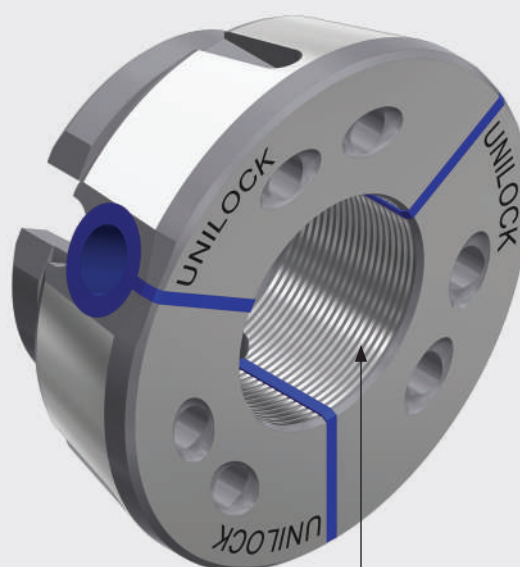
# SP - CLAMPING COLLETS

## MULTI SPINDLE LATHES SYSTEM



### SUPER GRIP

High friction coefficient



SUPER GRIP

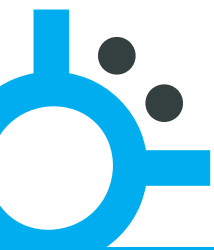
| MATERIAL        | DINAMIC FRICTION COEFFICIENT |
|-----------------|------------------------------|
| STAINLESS STEEL | 0,42                         |
| STEEL           | 0,48                         |
| BRASS           | 0,55                         |
| NO COATING      | 0,18                         |

## SUPER GRIP CLAMPING COLLETS

**SUPER GRIP COLLETS** as well as maintaining the basic features, it presents an **high friction coefficient** obtained by a special machining process, which increases the clamping force even further.

The **“dynamic friction coefficient”** is determined on the basis of the roughness present inside the collet and must be considered according to the type of material to be machined (e.g. stainless steel, steel, brass).

SEE TABLE

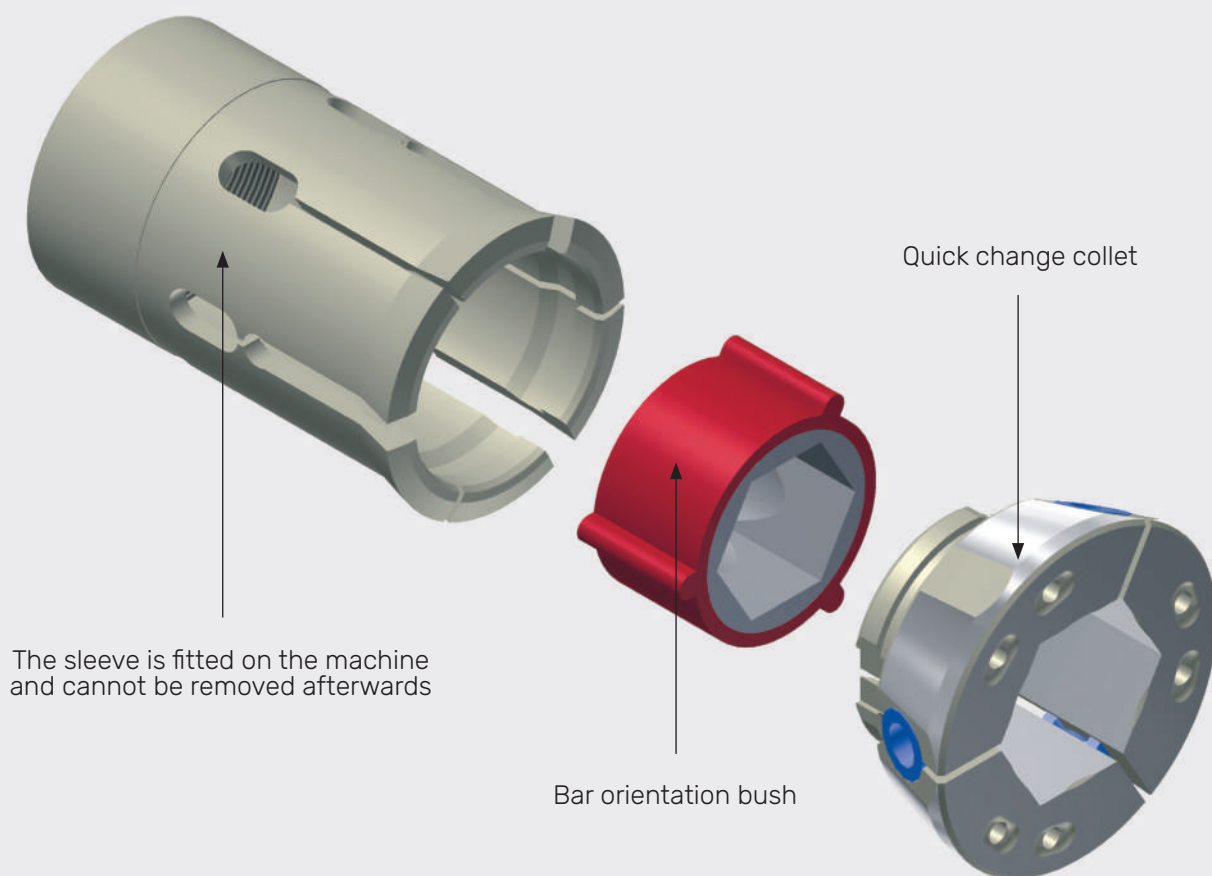


# SP - CLAMPING COLLETS

## MULTI SPINDLE LATHES SYSTEM

### TECHNICAL FEATURES

#### Centring bush



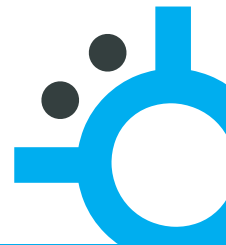
In multi spindle lathes equipped with an automatic bar loader - IEMCA or CUCCHI type - Unilock has created a housing inside the "mother" sleeve of a centring bush to facilitate insertion of the bar in the collet, especially for hexagon or square bars or special drawn ones.



QUICK CHANGE COLLETS FOR MULTI SPINDLE LATHES

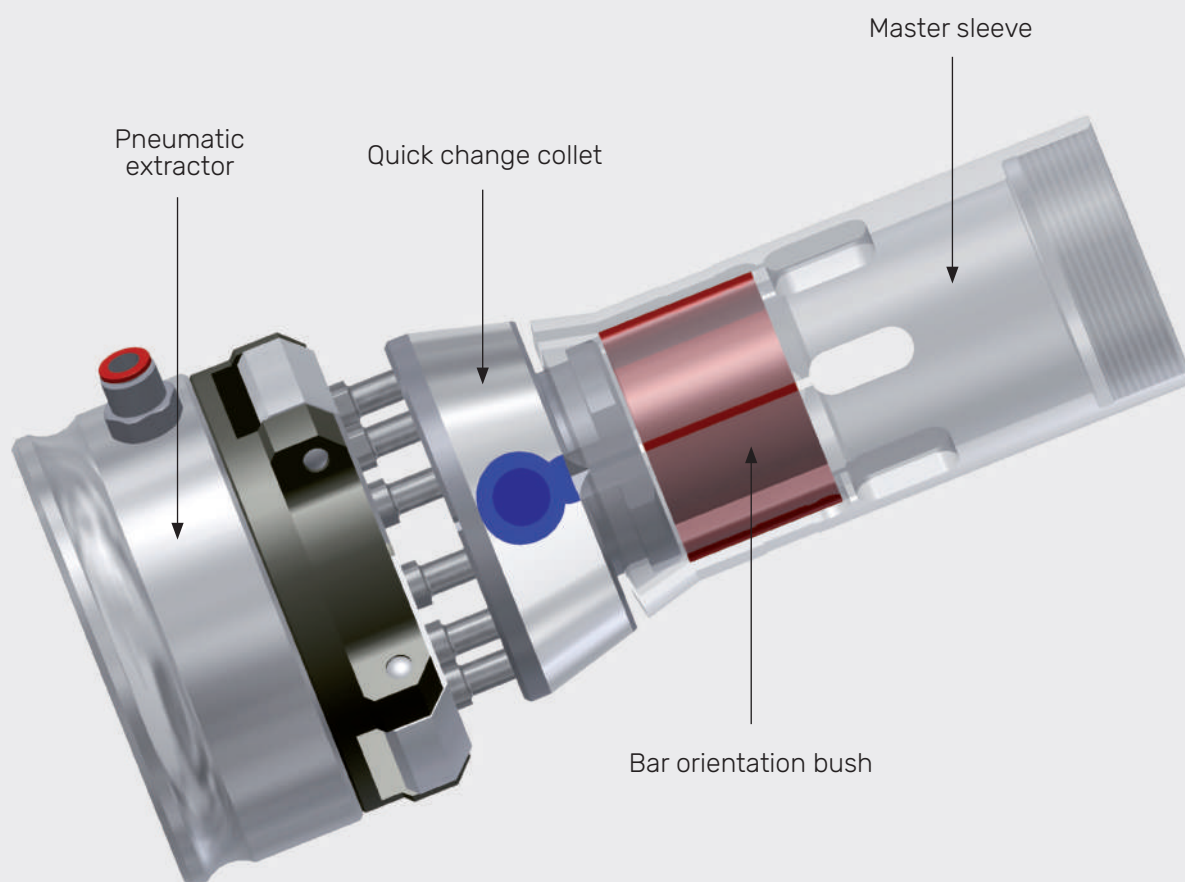
# SP - CLAMPING COLLETS

## MULTI SPINDLE LATHES SYSTEM

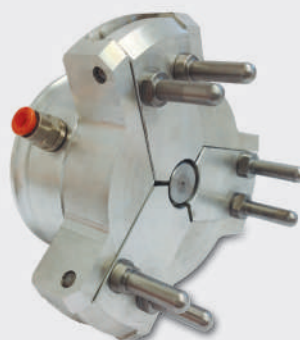


### TECHNICAL FEATURES

#### Quick change collet



Collet disassembly and change operations are simple and fast thanks to the use of a pneumatic extractor.



UNILOCK  
PNEUMATIC  
EXTRACTOR





# SP - CLAMPING COLLETS

## COMPATIBLE HAINBUCH

### ITEM CODES

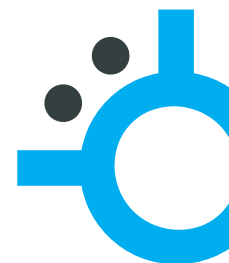
| COMPATIBLE HAINBUCH | ITEM N.         | MACHINE                      | COMPATIBLE CODE |
|---------------------|-----------------|------------------------------|-----------------|
| GILDEMEISTER        | SPHGM 35        | GM 35                        | 0164            |
|                     | SPH 6970 - BZ   | AS 32 - GM 35                | 6970 - BZ       |
| SCHUTTE             | SPSCH AG20      | SG 18 - AG 20                | 90071           |
|                     | SPSCH 26        | SF/AF/SE 26 - SF 25 - SCX 26 | 9039 - BZ       |
|                     | SPHSCH 732      | SCX 7 - 32                   | 27182           |
|                     | SPHSCH 732 PCKU | SCX 7 - 32 PICKUP            | 030633          |
|                     | SPHSCH 36       | 36 PC                        | 0096            |
|                     | SPSCH 32        | SF/AF 32 - 32 PC             | 6970 - BZ       |
|                     | SPHSCH 46       | 51 PC - SCX 7 - 46           | 0098            |
|                     | SPHSCH 46 PCKU  | SCX 7 - 46 PICKUP            | 030645          |
| INDEX               | SPIXMS 22       | MS 22                        | 9022            |
|                     | SMH65           | MS 52                        | 65 - BZI        |



For multi spindle lathes **GILDEMEISTER, INDEX, MORI-SAY, SCHUTTE, WICKMAN**

# SP - CLAMPING COLLETS

## COMPATIBLE UNILOCK



### ITEM CODES

| UNILOCK      | ITEM N.               | MACHINE                 | E-Nr     | THREAD          |
|--------------|-----------------------|-------------------------|----------|-----------------|
| SCHUTTE      | SPSCH 16              | SE 16/18                | 9007 - E | M28 x 1 sx      |
|              | SPSCH 20              | SF 20                   | 9016 - E | M30 x 1 sx      |
|              | SPSCH 26              | AF - SF 26 / SE 25      | 9039 - E | M40 x 1.5 sx    |
|              | SPSCH 32              | AF - SD - SF - VD 32    | 9070 - E | M47 x 1.5 sx    |
|              | SPSCH 42              | AD 40 / SF 42           | 9112 - E | M56 x 1.5 sx    |
|              | SPSCH 50              | SD - VD 50 / AF - SF 51 | 9139 - E | M68 x 1.5 sx    |
|              | SPSCH 63              | SD - VD 63              | 9179 - E | M82 x 1.5 sx    |
|              | SPSCH 80              | SD - VD 80 / AF - SF 81 | 9210 - E | M100 x 1.5 sx   |
| WICKMAN      | SPW 1                 | 1" - 6 M                | 9034 - E | Ø 37.74 x 24 sx |
|              | SPW 1 OS<br>over size | 1" V30                  | -        | Ø 44.2 x 1 sx   |
|              | SPW 13/8              | 1" 3/8 - 6 M            | 9072 - E | Ø 50.93 x 22    |
|              | SPW 134               | 1" 3/4 - 6 M            | 9111 - E | Ø 60.45 x 16    |
|              | SPW 214               | 2" 1/4 - 6 M            | 9142 - E | Ø 72.46 x 22 sx |
|              | SPW 258               | 2" 5/8 - 6 M            | -        | Ø 85.72 x 18    |
|              | SPW 314               | 3" 1/4 - 6 M            | -        | Ø 100.81 x 8    |
|              | SPW 32                | 32 MM - 8 M             | -        | Ø 46.038 x 18   |
| GILDEMEISTER | SPGM 20               | AS - GS - GM 20         | 9012 - E | M30 x 1 sx      |
|              | SPGM 20v25            | GS - GM 20v25           | 9017 - E | M34.5 x 0.75 sx |
|              | SPAS 25               | AS 25                   | 9045 - E | M40 x 1 sx      |
|              | SPGM 26               | GM 26                   | -        | AR Ø37 P 2.7    |
|              | SPGM 35               | GM 35                   | 9069 - E | M48 x 1.5 sx    |
|              | SPGM 35v40            | GMC 35v40               | -        | M52 x 1.5 sx    |
|              | SPGM 35v43            | GMC 35v43               | -        | M52 x 1.5 sx    |
|              | SPGM 42               | GM 42                   | 9115 - E | M59 x 1.5 sx    |
|              | SPAS 48               | AS 48                   | 9132 - E | M65 x 1.5 sx    |
|              | SPAS 67               | AS 67                   | 9178 - E | M85 x 1.5 sx    |
|              | SPAS 100              | AS 100                  | 9239 - E | M122 x 1.5 sx   |

clamping solutions

2021 edition



w w w . u n i l o c k . i t

**UNILÖCK**  
clamping solutions

**UNILÖCK SAS**

📍 Viale Edison, 56  
20090 Trezzano S/N (MI) • Italy  
☎ (+39) 02 48401499  
✉ info@unilock.it  
🌐 www.unilock.it